

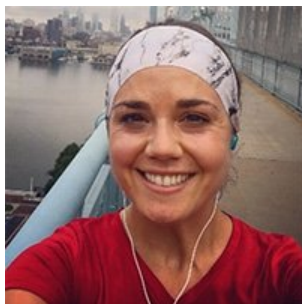


A Message from the Board

Our fall semester is off to a fantastic start and the excitement on campus is at an all-time high! Two weeks ago, we welcomed over 661 first-year students to campus -- including 150 international students.

Our RSPH Alumni Board President, **Kinsey McMurry 13PH**, has a few words of advice for our students as they begin their public health journeys and a call to action for our alumni -- keep your passion for public health close to your heart and continue to bring positive change to the world.

[READ MORE](#)



Alumni Spotlight: Emma Paras, MPH

September is National Preparedness Month. Throughout the month, national, regional, and local governments, as well as private and public health institutions, are preparing for the threats and hazards that pose the greatest risk to individuals and communities across the country.

For Rollins alumna **Emma Paras 14PH** every day is an exercise in preparedness. We caught up with her to learn more about her work as a Senior Emergency Preparedness Planner at The Children's Hospital of Philadelphia.

[READ MORE](#)



Rollins Student Earns Heart of Emory Award

Congratulations Rollins student and 2019 Heart of Emory award recipient, **Aisha Mahmood 20PH**. Aisha was recognized for the work that she does to promote collaboration and inclusion across campus, like the Emory bathroom initiative.

[READ MORE](#)



Meet Your Alumni Board

Comprising 15 standout Rollins graduates, our RSPH Alumni Board members are helping to inform and carry out our school's mission, and working to meet the professional needs of our alumni.

[MEET THIS YEAR'S BOARD](#)



Nancy Thompson Retires

After four decades of teaching, beloved BSHE professor and Rollins alumna, **Dr. Nancy Thompson 77PH**, is retiring. Throughout her tenure, Dr. Thompson has demonstrated excellence in teaching, tireless advocacy for her students, and unparalleled contributions to public health scholarship and practice.

We hope you'll consider commemorating Dr. Thompson's career with a gift in her honor to the **Nancy J. Thompson Award**, which will provide support for outstanding MPH students in BSHE.

[MAKE A GIFT](#)

News & Events

Class Notes

Our alumni are always doing amazing things in their careers and personal lives. [READ](#) what your fellow alumni are doing.

Faculty News

Rollins faculty are making headlines with their research and leading with their expertise. [READ](#) faculty accomplishments.

Upcoming Events

Looking for some fun, social ways to connect with your fellow Rollins alumni? Recently moved to a new city and need to make new friends? Living abroad and can't make the local events? From lectures and virtual networking to happy hours and webinars, we've got a little something for everyone no matter where you live. [VIEW EVENTS](#)

Careers & Networking

Career Tip: Building a Professional Team for Any Career

To effectively develop a successful career, personal brand, mentoring relationships, and professional opportunities need to be identified to move you towards progress. It's this kind of preparation that instills confidence and leaves you poised for success. [READ MORE](#)

Explore Emory's Global Alumni Network

Plugging into Emory's global and influential network of alumni is as simple as creating a profile on Emory Connects, Emory's exclusive online networking platform. [GET STARTED](#)

Opportunities for Continued Learning

Looking for an opportunity to share what you've learned, hear about the latest in research, or expand your professional network? Consider attending one of the many public health conferences happening domestically and abroad this fall. [VIEW LIST](#)

Why I Give to Rollins...



I support Rollins because I am so grateful for the experiences, education and connections I received as a student. These changed the entire trajectory of my career. I'm so fortunate, largely because of Rollins, to be able to make a living while also making a difference. My donations go to helping provide this opportunity to others in the Executive MPH program.

– Elizabeth Sprouse, MPH
2018 Applied Public Health Informatics



UPDATE
INFO

GET
INVOLVED

MANAGE
CAREER

MAKE A
GIFT

sph.emory.edu