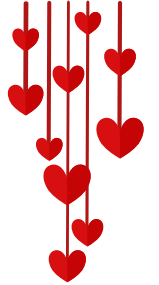




KEEP UP WITH THE PASE

2024-2025 | VOLUME 3

Based in the Office of Student Affairs, the Professional Advancement & Student Experience (PASE) Center provides student-centered, co-curricular programs and services that aim to create a holistic student experience at the Rollins School of Public Health.



Use 12Twenty to:

- Sign up for coaching and advising appointments
- Register for upcoming events



🌟 FEBRUARY EVENTS 🌟

**Leadership & Professional
Development**

**YOU'RE
INVITED!**

It's Career & Networking Fair Season!

The RSPH Career & Networking Fair will take place this month! The PASE Center is offering a Prep Series to help increase your confidence in creating connections and preparing for your public health career.

Career Fair Prep



[Wed. Feb 12 | 12:00 - 1:00 PM](#)
Job Search Strategy - Roger Presswood



[Wed. Feb 12 | 5:45 - 7:30PM](#)
Career Fair Prep Series: Next Steps - Part 2 Your Brand Starts with You



[Wed. Feb 12 | 9:00 - 10:00AM](#)
PASE Career Drop-In Hours



[Fri. Feb 7 | 9:30 - 2:00 PM](#)
RSPH Spring 2025 VIRTUAL Career & Networking Fair



[Fri. Feb 14 | 10:00 - 2:00 PM](#)
RSPH Spring 2025 In-PERSON Career & Networking Fair



[Wed. Feb 26 | 11:00 - 3:00 PM](#)
STEM Virtual Career & Grad Fair



[Wed. Feb 19 | 11:00 - 3:00PM](#)
Engineering & Science Virtual Fair

online

KEEP UP WITH THE PASE

2024 - 2025 | VOLUME 3

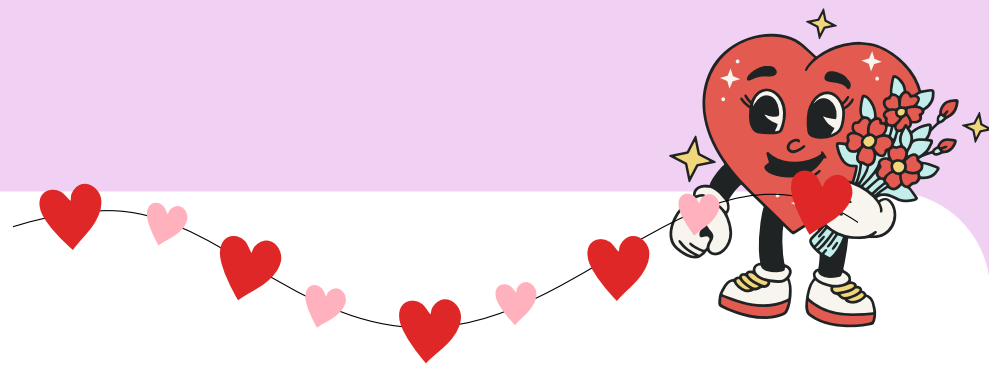


EMORY

ROLLINS
SCHOOL OF
PUBLIC
HEALTH

Professional Advancement and
Student Experience Center
PASE

Public Health Partnerships



Explore New Industries & Hear from Alumni



[Thurs. Feb. 06 | 12:00 - 1:00PM](#)
Cracking the Case: Deloitte
Case Interview Preparation
Workshop - Part II



[Thurs. Feb 20 | 12:00 - 1:00 PM](#)
Alumni Career Chat Series II -
Dr. Astha Purohit

online



[Thurs. Oct. 17 | 12:00 - 1:00PM](#)
[Wed. Feb 19 | 1:00 - 2:00PM](#)
Building a Career in Public
Health Laboratory Science

online



[Thurs. Feb 27 | 12:00 - 1:00 PM](#)
Employer Information
Session: Mathematica

online



Community Belonging & Well-Being



[Tues. Feb. 11 | 12:00 - 1:00PM](#)
Slashing the Jitters through
IMPROV!



[Thurs. Feb 20 | 11:00 - 3:00PM](#)
Health Professions Fair for
Underserved &
Underrepresented Students



[Wed. Feb 19 | 12:00 - 1:00 PM](#)
Tea, Games, and Connections:
Bringing International &
Domestic Students Together



[Wed. Feb 26 | 12:00 - 1:00 PM](#)
RecWell @ Rollins: Sound
Bath Healing

Download the RSPH Student Support Toolkit
for a comprehensive list of resources



Connect With Us:



R. Randall Rollins Building Suite 300
1518 Clifton Rd. NE | Atlanta, GA 30322



@rollins.pase



rollins.pase@emory.edu